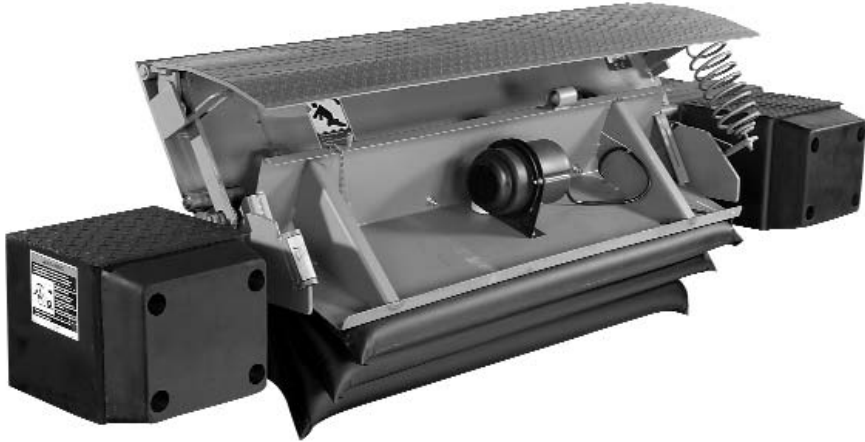


# Edge-of-Dock Air Levelers

An economical solution for dock safety and efficiency



Edge-of-Dock Air Leveler Models Available

| Model    | Width | Length | Capacity    |
|----------|-------|--------|-------------|
| AEOD6620 | 66"   | 28"    | 20,000 lbs. |
| AEOD6630 | 66"   | 28"    | 30,000 lbs. |
| AEOD7220 | 72"   | 28"    | 20,000 lbs. |
| AEOD7230 | 72"   | 28"    | 30,000 lbs. |
| AEOD7830 | 78"   | 28"    | 30,000 lbs. |
| AEOD8430 | 84"   | 28"    | 30,000 lbs. |

## Design Highlights

**Simple, ergonomic push-button operation with a high-volume, low-pressure air bag lifting mechanism.**

- Push-button operation
- Broad working range (5" above and below dock)
- Reinforced bumpers
- High-volume, low-pressure air bag lifting mechanism
- Lifting bag is fully operational under extreme temperatures of -65° to 180° F
- If punctured, bag is completely operational and repairs easily
- Minimal maintenance required
- Durable construction

## Project Information

Job Name \_\_\_\_\_

Address \_\_\_\_\_

General Contractor \_\_\_\_\_

Distributor \_\_\_\_\_

Model \_\_\_\_\_ Voltage \_\_\_\_\_

Quantity \_\_\_\_\_

## Certified For Construction

Company \_\_\_\_\_

Address \_\_\_\_\_

By \_\_\_\_\_

Date \_\_\_\_\_



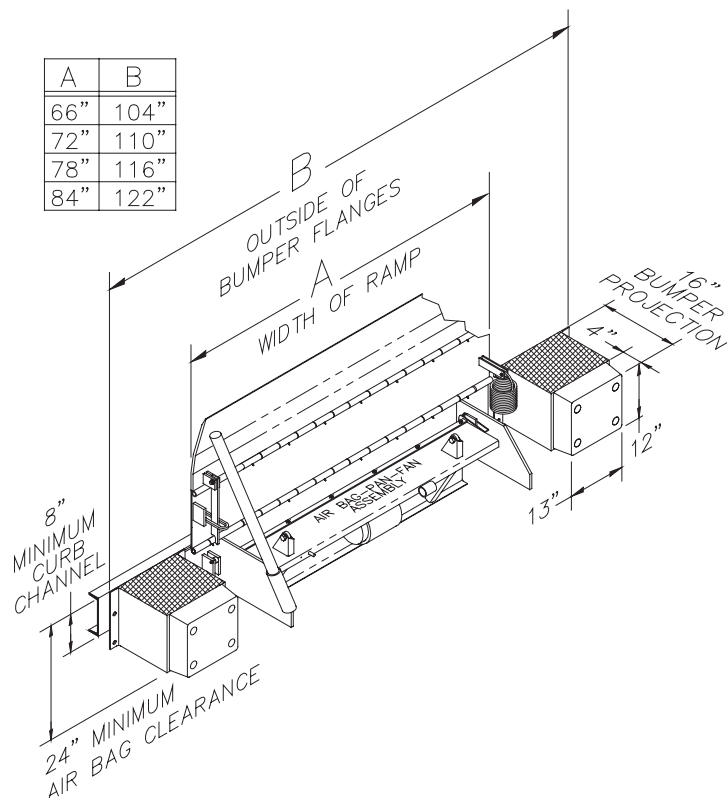
**APS Resource**  
*Your Aftermarket Solution*

**6219 West Eastwood Court**  
**Mequon, WI 53092**  
**Phone: 262-518-1000**  
**Fax: 262-518-1030**  
**www.apsresource.com**

# Edge-of-Dock Air Levelers

## Specifications

- 1. General:** Air-activated EOD hinged lip leveler with air-bag operated ramp and mechanical lip extension. Unit conforms to ANSI MH14.1 1987 performance requirements.
- 2. Construction:** Lip and ramp section to be minimum 3/8" thick steel safety tread plate on 20,000 lb. capacity and 1/2" on 30,000 lb. capacity unit, 50,000 PSI yield strength. Lip hinge bar to be minimum 1/2" x 2" steel, fillet welded to ramp plate section. Hinge tube to be minimum 7/32" wall thickness DOM tubing.
- 3. Electrical:** 12 amp fan with two-stage single speed, self-cleaning filter, UL approved motor. Runs off 115V single-phase electrical power.
- 4. Air Bag:** Lifting bag operates under temperature of -65° to +180° F.
- 5. Control Panel:** Nema 4 single button panel.
- 6. Product Finish:** Edge-Of-Dock Leveler primed followed by an enamel gray paint.
- 7. Operation:** Dock leveler rises when NEMA 4 push-button (by APS) is pushed and held. Upon release of the push-button, the lip automatically extends as deck descends into trailer bed. After loading/unloading is complete, dock attendant pushes button to activate air system and raise the leveler. Lip falls pendant, dock attendant releases button, and dock leveler is stored. Operating range to be 5" above and 5" below dock.
- 8. Float Compensation:** Unit designed to float allowing for vertical carrier deflection when lip is in contact with truck bed.
- 9. Installation:** Unit shipped assembled and ready for installation. Edge-of-Dock Leveler should be welded securely to an embedded channel in the dock face. Control panel for remote mounting is furnished with unit to be electrically interconnected by others. Installation by others.
- 10. Warranty:** Two-year warranty against defects in material and workmanship.
- 11. Bumpers:** Unit to include two bumper block assemblies with factory installed molded rubber bumpers.



### Available Options:

- Longer Refrigerated Style Lip
- Vertical Steel-Face Bumper
- Transition Plate (Size 12" X 9'6")
- Transition Plate (Size 24" X 9'6")
- Other \_\_\_\_\_

### Accessories

- Trailer Restraint Model \_\_\_\_\_
- Other \_\_\_\_\_



**APS Resource**  
Your Aftermarket Solution

6219 West Eastwood Court  
Mequon, WI 53092  
Phone: 262-518-1000  
Fax: 262-518-1030  
www.apsresource.com